



# A Modern Green Oasis

Setia City Park is a contemporary mosaic of cultures and community in Malaysia

By: STX Landscape Architects

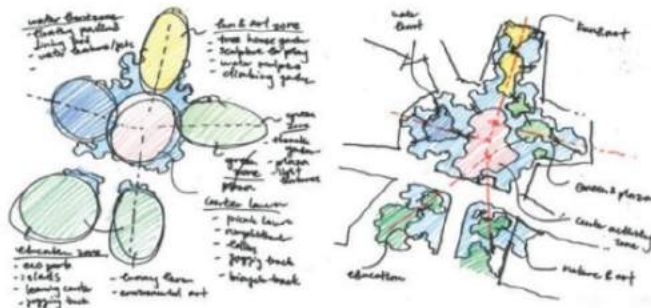
Setia City Park was designed to celebrate a modern, suburban district, composed of a variety of zones dedicated to recreation and relaxation for all ages.

Surrounded by residential districts, industrial and commercial micro-cities, the city park was conceptualised based on the inherent desire for connectivity to play, within open and informal spaces in and around areas of work.

Located in Shah Alam, Selangor Darul Ehsan, Malaysia, the park is a 7.25ha of public space that revived desolate landscapes into a vibrant pulse of activity islands, collectively known as "archipelago", designed to synergise the delicate balance between human-use and nature.

The archipelago consists of islands, which became packets of activities, catering to both intimate and public functions, while making use of various sites and configurations. The islands are surrounded by a calming oasis, making it seemed like they were floating, independently from each other. By nature of design, these islands have the flexibility to change and reprogrammed as necessary.

The placement and allocation of each landscape space is a unique manifestation of rigorous analysis, to appreciate the potential use of the land around the designated site and the relationship of the park throughout the community within Setia Alam. Setia City Park was designed to create a habitat for a variety of flora and fauna, thus increasing its surrounding biodiversity.



## The Oval Lawn

At the heart of the project lies the oval lawn as the central point of convergence, with the aim of providing an open area that can cater for a multiplicity of different needs and recreational activities.

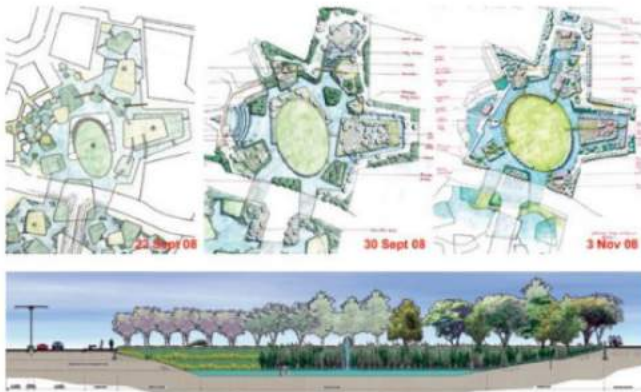
The lawn is connected by bridges, like arteries, to five other activity peninsulas such as the water jets plaza, the romantic theme garden, the formal garden, the lawn mound garden and the kids play garden.

A performance stage deck is carved out at the southern tip of the lawn to accommodate to events and celebrations. When not used for formal occasions, the arena provides an informal space for socialisation and play.

The final character of each island peninsula was a sensibly-planned design corresponding to its immediate land-use requirements.







Walkways connect all play areas strategically, while pockets of planting are designed into the area to exude a sense of sensitivity, apart from providing the necessary protection from heat and the comfort from natural and green elements surrounding the playground. The play equipment personifies a contemporary theme in mind, with minimalist design aesthetics that is unique, thoughtful and interactive.

**Bioretention Ponds**

Across the Persiaran Setia Dagang, two retention ponds with timber decks were planned into the design, with plants grouped in patterns, creating a visual intent that echoes the central park design form. A row of tall and mature royal palms lines the edge of the bio-retention pond and the roadway of the mall, acting as a formal green backdrop.

These ponds were intentionally designed to utilise run-off water from the adjacent new developments. These bodies of water were harvested and reprocessed to create the self-sustaining bio-retention ponds.

Linear lawn steps were attached to the edge of the pond to cater for seating spaces.

In the evenings, the lawn steps are lit with concealed lighting to enhance the night view along the pool's edge, thus creating a dramatic glowing effect, seen rising from the earth mound.

**Water Jet Plaza**

Right at the main entrance to the Setia City Mall are the enchanting light fountain at the Water Jet Plaza. This colourful display of hues features over 120 water jets dancing and swaying in a delightful thematic and rhythmic pattern, creating a spectacle of light and sound.

When turned off, the plaza serves as a spacious arena for temporary pop-ups, or an impromptu area for mall events.

These landmarks features are examples of design enhancements aim to accentuate existing landforms and increase engagement with existing topography.

**Children's Garden**

The children's garden or the kid's play garden located at the south of the water plaza is designed as an active zone for kids.

The playground is divided into five main areas. These play zones provide different physical experiences to cater to different age groups and the diverse needs of its users.



**The Formal Garden and the Romantic Theme Garden**

The overarching planting strategy for Setia City Park is based on the recreation of a native landscape within its endemic environment to increase the landscape's biodiversity. This gives the park a distinctive character and sense of place.

The formal gardens, located in the east of the oval lawn, express the geometric designs that divide the peninsula, into pockets of smaller, thematic, intimate spaces. The fragrance, flowering, topiary, herbs and spices planting beds are linked with poetic fountains, green arbours or seating pavilions.

Wrapping the edge of the formal gardens in a linear embrace are the giant mosaic mimicking patterns of an ice-wedge polygon, visually floating on a shallow reflecting pool.

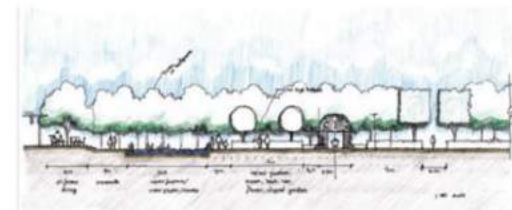
On the south side of the formal garden, angular lawn mounds and palm groves provide an ideal spot for dining under-the-stars or leisurely strolls. In the evenings, one can sit around the garden, enjoying the sunset reflecting off the pond.

The Romantic Theme Garden situated northeast of the oval lawn was planned as an extended outdoor space, adjacent to the Convention Centre. The garden was also conceptualised as an area sculptured to provide a serene environment for quiet contemplation and personal reflection.

When need arises, the area can be transformed to accommodate to private, small-scale events such as an outdoor wedding reception or birthday celebrations, with a stunning backdrop of the lush green lawn and a quiet, reflective pond.

The resulting landscape at the Setia City Park stays true to the tradition of city parks, providing the surrounding communities with opportunities to meet, greet, interact, and celebrate with neighbours in a healthy, holistic environment, as well as providing sanctuaries for quiet contemplation.

The sum of these experiences forges a more intimate relationship between landscape and site, as nature is reintegrated into the city's urban lifestyle; while curating a delicate balance between flora and fauna as they cohabitate and coexist in a dynamic equilibrium. ■



Project Name: Setia City Park  
 Client: Bandar Setia Alam Sdn Bhd  
 Landscape Architect: STX Landscape Architects (Previously known as Sitetecnonix Pte Ltd)  
 Architect: ArchiCentre Sdn Bhd (for Restroom Facilities)  
 C&S Engineers: TSSC Lim Sdn Bhd  
 M&E Engineers: Coburg Consulting Sdn Bhd  
 Quantity Surveyors: Bandar Setia Alam Sdn Bhd  
 Contractors: Lee Landscape Sdn Bhd  
 Project Landscape Architect: LandArc Associates Sdn Bhd  
 Water-Feature Specialist: Waterlink Technologies Sdn Bhd  
 Water-Feature Specialist (Water Jet Plaza): Glomedic International (OASE) Malaysia  
 Children's Plan Equipment: Playpoint (Malaysia) Sdn Bhd  
 Photographer: John Gollings Photography