



The 57th IFLA WORLD CONGRESS



18-22 AUGUST 2021

LIVE STREAMING FROM
GEORGE TOWN, PENANG, MALAYSIA

ONLINE

FREE VIEW

ON DEMAND

Days Hours Minutes Seconds

04

04

34

50

WHEN /

FRINGE EVENTS

INTERNATIONAL STUDENT CHARRETTE :

28-30 JULY 2021

IFLA EXCO & WORLD COUNCIL MEETING :

15-17 AUGUST 2021

KOPITIAM OPEN STUDIO :

17 AUGUST 2021 ONWARDS

INTERNATIONAL STUDENT DESIGN COMPETITION :

18 AUGUST 2021 ONWARDS

MAIN EVENTS

18-22 AUGUST 2021

WHERE /

**LIVE STREAMING FROM
GEORGE TOWN, PENANG, MALAYSIA**

For the first time in the history of IFLA, the IFLA 2020 World Landscape Architects Summit will play a leading role in formulating and creating landscape architecture-based solutions, for a brighter future.

IFLA2020 will be the platform where regional delegates can share issues, ideas, and inspiration, to ensure the landscape architecture profession is ready to face the requirements of society, the environment, and urban living, for the next 10 years.



5 DAYS



4 HOURS

DAILY LIVE STREAMING



26 LIVE

INVITED SPEAKERS



70

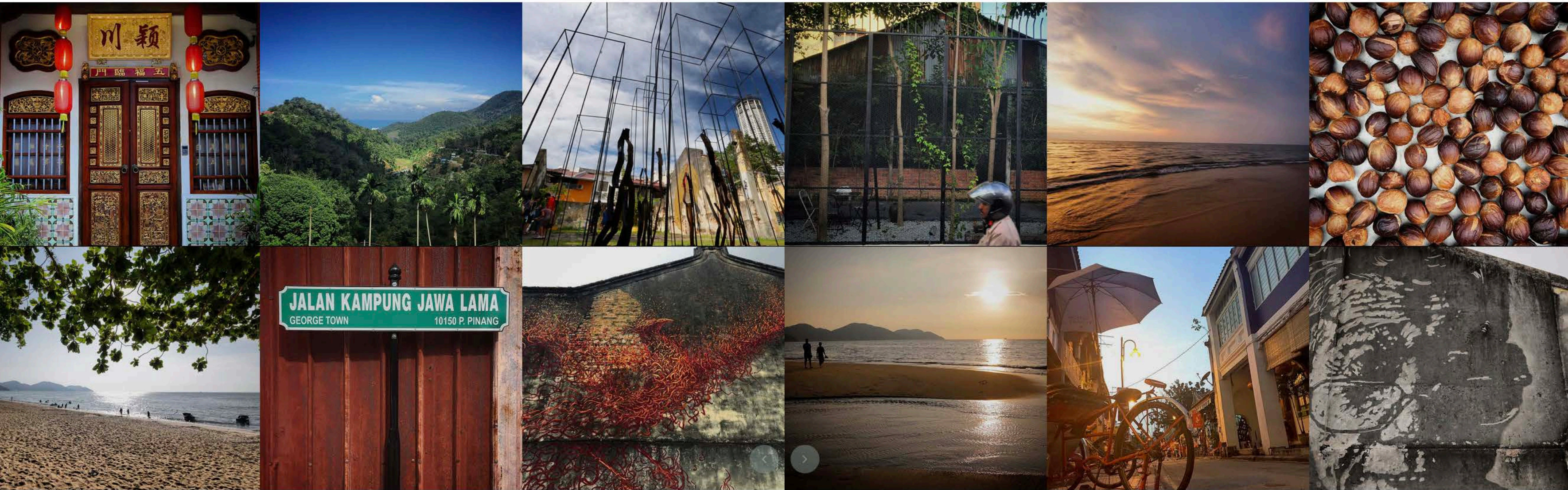
ON DEMAND VIDEO



7

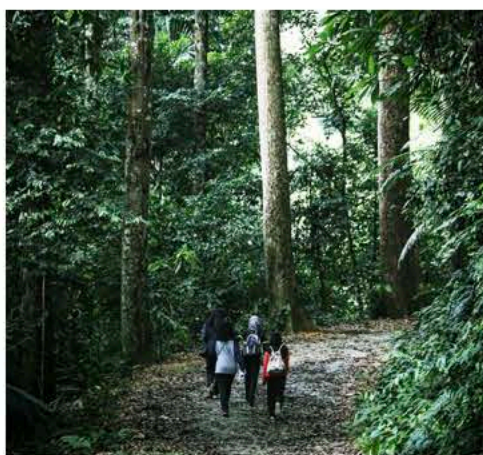
TECHNICAL VISITS

A GLIMPSE OF GEORGE TOWN PENANG



THEME FUTURE/TENSE

SUB-THEMES



FINITE RESOURCES

As the world's population is growing at a startling rate, our finite landscape and natural resources are diminishing fast. How can the planning and design of our landscape spaces sustain these finite resources for better future living condition and environment?



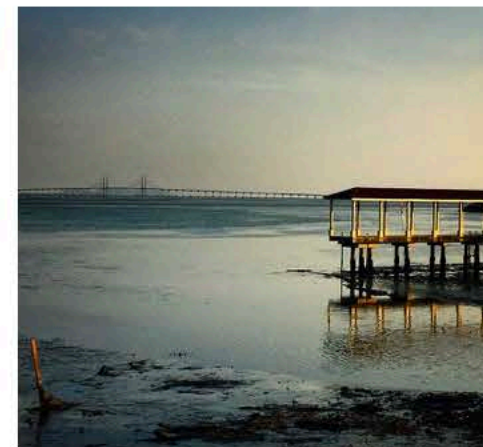
TRANSIENT LIVING

The advancement of Internet of Things (IOT) has change many aspects of our life. The way we work, communicate, socialise, and play are different from the past decades. How can landscapes co-exist or complement this transient living environment where IOT is an integral part of our day-to-day life, now and the future?



HOMOGENOUS CULTURE & DIVERSE POPULATION

Globalisation and the advancement of transportation system and connectivity render our cities' population to be more diverse in ethnicity, religion, nationality, ability and thinking. As landscape spaces are usually "public" in nature, how could the planning and designing of our landscape spaces cater to these diverse demands, needs and preferences?



NATURAL DISASTER : EXPECT THE UNEXPECTED

The effect of global warming that we are experiencing now causing the lost of biodiversity and extinction of wildlife. How does landscape architecture practice helps to reduce natural disaster occurrences? Do we have new methods, approaches, techniques and skills?

MAIN EVENTS

Day 1

Day 2

Day 3

Day 4

Day 5

LIVE STREAMING

IFLA2020 Opening Ceremony & Keynote Address

18 AUGUST 2021 (WED)

Malaysia Time Zone: (GMT+8)

LIVE FROM HIN BUS DEPOT, GEORGE TOWN, PENANG, MALAYSIA



IFLA2020 OPENING CEREMONY

Online

Free View

11:45am

Online arrival and login in

12:00pm-12:40pm

- National Anthem & Doa Recital
- Remarks by Assoc. Prof. LAr. Dr. Suhardi bin Maulan, IFLA2020 Organising Chairman
- Remarks by Mr. James Hayter, International Federation of Landscape Architects (IFLA) President
- Welcome to Malaysia Showcase - "Amazing"

12:40pm-12:50pm

SDG Remarks by YBhg. Dato' Seri Paduka Maimunah binti Mohd Sharif
Executive Director of the United Nations Human Settlements Programme (UN-Habitat)

12:50pm-1:25pm

- Speech by YB Datuk Hajjah Zuraida binti Kamaruddin, Minister of Housing & Local Government
- Welcoming Speech by YAB Tuan Chow Kon Yeow, Penang Chief Minister
- Sponsor Showcase 2: The Habitat Penang Hill
- Officiating Speech by YAB Tan Sri Dato' Seri Haji Muhyiddin bin Haji Md. Yassin, Prime Minister of Malaysia

1:25pm-1:40pm

Merbau's Fable
A performance by Plasticity Theatre Troupe & Dr. Mustafa Kamal Mohd Shariff

1:40pm-1:50pm

Presentation of IFLA President Award

1:50pm-2:30pm

Presentation of Sir Geoffrey Jellicoe Award

2:30pm

Sponsor Showcase 3: Batek-Lah
End of Opening Ceremony

IFLA2020 STUDENT DESIGN COMPETITION WINNER ANNOUNCEMENT

Online

Free View

2:30pm-3:00pm

IFLA2020 Student Design Competition Winner Announcement
Sponsor Showcase 4: Group Han

IFLA2020 OPENING THEME KEYNOTE

Online

3:00pm

Live Theme Keynote Session
Moderator: Assoc Prof. LAr. Dr. Khalilah Zakariya



3.00PM-3.30PM

Theme Keynote "Future Tense"

Frederick Steiner
(USA)



3.30PM-4.00PM

Keynote 1
"Finite Resources"

Hajjah Rotina Mohd Daik
(Malaysia)



4.00PM-4.30PM

Keynote 2
"Transient Living"

Adam White
(United Kingdom)



4.30PM-5.00PM

Keynote 3
"Homogenous Culture & Diverse Population"

Kongjian Yu
(China)



5.00PM-5.30PM

Keynote 4
"Natural Disaster- Expect the Unexpected"

Kotchakorn Voraakhom
(Thailand)

5:30pm - 5:45pm

Wrap Up, Online Quiz & Winner Announcement
End of Day1

Day 1

Day 2

Day 3

Day 4

Day 5

LIVE STREAMING

IFLA2020 Satellite Hub 1
“Transient Living”
19 AUGUST 2021 (THU)

Malaysia Time Zone: (GMT+8)

LIVE FROM HIN BUS DEPOT, GEORGE TOWN, PENANG, MALAYSIA



IFLA2020 SATELLITE HUB 1 Online

2:00pm–3:00pm

IFLA2020 Showcase

3:00pm

Live Panel Session 1
Theme: Transient Living
Moderator: Dr. Haza Hanurhaza Md Jani



3:00pm–3:40pm

Yongjun Jo

CA Landscape
(Korea)



3:40pm–4:20pm

Andrew Grant

Grant Associates
(UK)



4.20pm–5.00pm

Sofia Castelo

Think City
(Malaysia)



5:00pm–5:40pm

Prof. Dr. Stephen M. Ervin

Harvard Graduate School of
Design
(USA)



5:40pm–6:20pm

LAr. Phua Chin Eng

Landart Design
(Malaysia)

6:20pm – 6:45pm

Wrap Up
Online Quiz & Winner Announcement
End of Day 2

7:00pm –8:30pm

IFLA2020 Forum
Climate Emergency from All Continents: Landscape Architects in Action
Hosted by: IFLA Climate Change Working Group



Chaired by:

Kotchakorn Voraakhom

Chairwomen of Climate
Change IFLA World

Panelists:

1. Sunday Abuje (IFLA Africa)
2. Farimah Sadat Jamali Representative of (IFLA Middle East)
3. Raquel Penalosa (IFLA Americas)
4. Claire Martin (IFLA Asia-Pacific)
5. Tony Williams (IFLA Europe)



IFLA2020 SATELLITE HUB 2 Online

2:00pm-3:00pm

IFLA2020 Showcase

3:00pm

Live Panel Session 2
Theme: Homogenous Culture & Diverse Population
Moderator: LAr. Teng Pe Yang



3:00pm-3:40pm

Assoc Prof Dr Adel Bakheet Alzahrani

Faculty of Architecture and Planning, King Abdulaziz University (Saudi Arabia)



3:40pm-4:20pm

Assoc Prof LAr Dr Nor Atiah Ismail

Faculty of Design and Architecture, Universiti Putra Malaysia (Malaysia)



4.20pm-5.00pm

Stuart Glen

Greeninc (South Africa)



5:00pm-5:40pm

Patricia O' Donnell

The Cultural Landscape Foundation (USA)



5:40pm-6:20pm

Prof Dr Sue Ann Ware

School of Architecture and Built Environment, The University of Newcastle (Australia)

6:20pm - 6:45pm

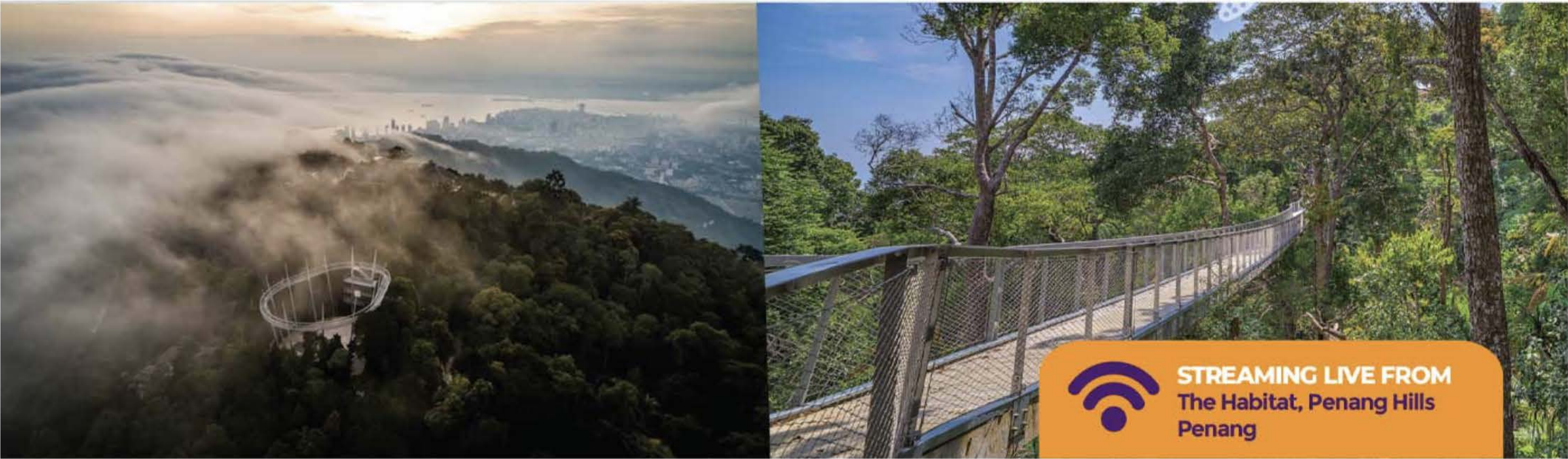
Wrap Up

IFLA2020 Satellite Hub 3
"Finite Resources"

21 AUGUST 2021 (SAT)

LIVE FROM THE HABITAT PENANG HILLS, PENANG, MALAYSIA

Malaysia Time Zone: (GMT+8)



IFLA2020 SATELLITE HUB 3 Online

2:00pm-3:00pm

IFLA2020 Showcase

3:00pm

Live Panel Session 3
Theme: Finite Resources
Moderator: Dr. Siti Nur Hannah Ismail



3:00pm-3:40pm

Prof. Dr. Laila ElMasry Stino
Sites International
(Egypt)



3:40pm-4:20pm

Helen Smith Yeo
STX
(Singapore)



4.20pm-5.00pm

Allen Tan
The Habitat Foundation
(Malaysia)



5:00pm-5:40pm

Prof. Emeritus Dr. Richard C. Smardon
State University of New York
College of Environmental
Science and Forestry
(USA)

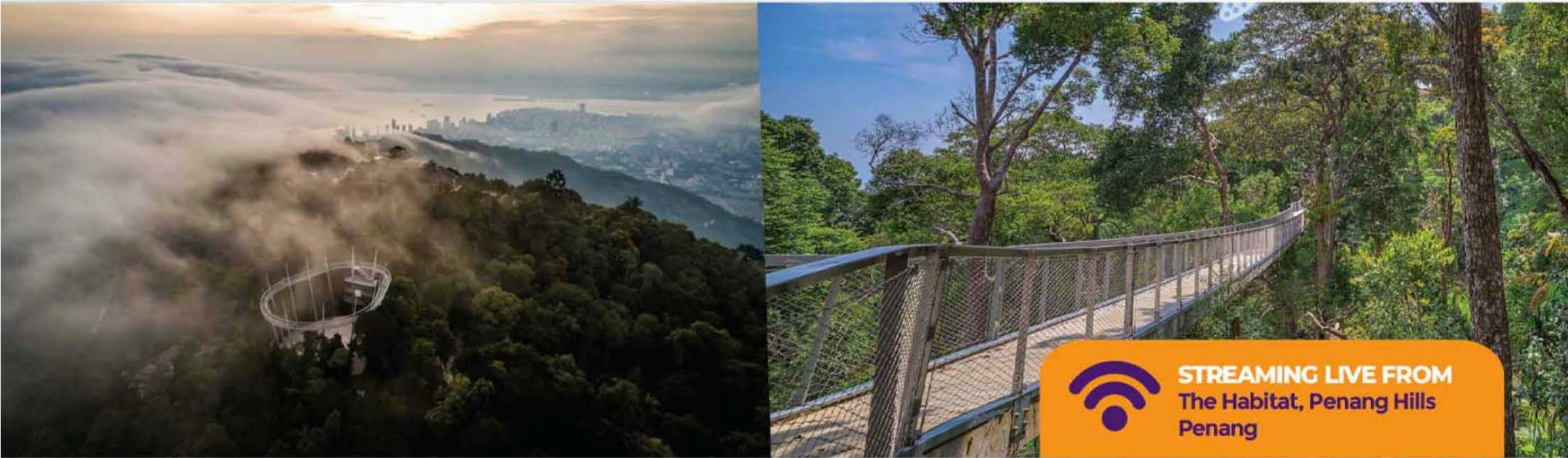


5:40pm-6:20pm

Jack Campbell Clause
Kounkuey Design Initiative
(Kenya)

5:40pm-6:20pm

Wrap Up



IFLA2020 SATELLITE HUB 4 Online

1:00pm-2:00pm

IFLA2020 Showcase

Sponsor Showcase:
Live Panel Session 4
Theme: Natural Disaster: Expect the Unexpected
Moderator: LAr. Ainol Najwa



2:00pm-2:40pm

Prof. Dr. Stephen Sheppard

University of British
Columbia
(Canada)



2:40pm-3:20pm

Isaku Okuyama

PREC Institute Inc.
(Japan)



3.20pm-4.00pm

Assoc. Prof. Dr. Kristina Hill

College Of Environmental
Design, University Of
California, Berkeley
(USA)



4:00pm-4:40pm

Yossapon Boonsoom

SHMA Limited
(Thailand)



4:40pm-5:20pm

Prof. Martha Schwartz

Harvard Graduate School of
Design
(USA)

5:20pm - 5:30pm

Wrap Up
Online Quiz & Winner Announcement

5:20pm - 5:30pm

Wrap Up

Online Quiz & Winner Announcement

IFLA2020 CLOSING CEREMONY

Online

Free View

5:30pm-5:40pm

IFLA2020 Special Awards

5:40pm-5:50pm

- Thank you speech by Assoc. Prof. LAr. Dr. Suhardi bin Maulan, President of Institute of Landscape Architects Malaysia (ILAM)
- Concluding Remarks Mr. James Hayter, International Federation of Landscape Architects (IFLA) President

5:50pm-6:10pm

- Closing Speech by YB Yeoh Soon Hin, Penang State EXCO Office for Tourism and Creative Economy (PETACE)
- IFLA2020, Our Journey
- IFLA Flag Handover Ceremony
- IFLA2022 World Congress Promotional Video

6:15pm

End of IFLA2020 World Congress

and World Landscape Architects Summit

ONLINE

IFLA2020 TRADE EXHIBITION

18-22 AUGUST 2021 (WED-SUN)

9:00am-6:00pm

Online Trade Exhibition & Store

ON DEMAND

ON DEMAND VIDEOS

18 AUGUST 2021 (WED) UNTIL 30 SEPT 2021

1:00pm onwards

On Demand Videos (from Paper and Video Submissions)

Theme: Natural Disaster: Expect the Unexpected

Technical Visit Videos

Video 7:

Seberang Perai Cultural Discovery - Pekan Lama Rehabilitation



Institute of Landscape Architects Malaysia (ILAM)

Founded in 1981, the Institute of Landscape Architects Malaysia (ILAM) is Malaysia's national professional association for landscape architects, representing more than 1,000 members. We lead the stewardship, planning, and design of built and natural environments across the nation. The Institute's mission is to advance landscape architecture and raise the visibility of the profession through advisory support to both public and private sectors. Education, accreditation support, international relations with other professional bodies, awards and recognitions within the industry and conducting seminars are programmes designed to uplift professional standards at all levels.

www.ilamalaysia.org



International Federation of Landscape Architects (IFLA)

A truly global federation, IFLA currently represents 77 national associations from Africa, the Americas, Europe, Asia Pacific and the Middle East. Our mission as landscape architects is to create globally sustainable and balanced living environments for the benefit of humanity worldwide.

IFLA officially represents the world body of landscape architects through its member associations and regions and in both governmental and non-governmental organizations, such as the UN, UNESCO, UIA, etc. IFLA is a not-for-profit, non-political, non-governmental organisation.

The mission is to promote the landscape architecture profession within a collaborative partnership of the allied built-environment professions, demanding the highest standards of education, training, research and professional practice, and providing leadership and stewardship in all matters.

www.iflaworld.com



NATIONAL LANDSCAPE DEPARTMENT
MINISTRY OF HOUSING AND LOCAL GOVERNMENT

National Landscape Department

The National Landscape Department was established in 1996 as an entity under the Ministry of Housing and Local Government entrusted with the responsibility of greening the Nation and ensuring our landscape is at its best condition.

The Department has been mandated to lead the Nation's efforts in achieving the aspiration of Beautiful Garden Nation, in line with Malaysia's goal of being a developed nation by 2020. Furthermore, in addressing the issues of climate change the Department is committed to realise Malaysia's commitment in the protection and conservation of natural resources as declared in the Langkawi Declaration (1989), the Rio De Jenario Earth Summit (1992), and COP15 (U.N. Climate Change Conference 2009). Hence, the quality of Malaysian living environment and socio-economic standards can be protected and alleviated.

www.jln.gov.my

Welcome IFLA2020

For the first time in the history of IFLA, the IFLA 2020 World Landscape Architects Summit will play a leading role in formulating and creating landscape architecture-based solutions, for a brighter future.

IFLA2020 will be the platform where regional delegates can share issues, ideas, and inspiration, to ensure the landscape architecture profession is ready to face the requirements of society, the environment, and urban living, for the next 10 years.

When?

18-22 August 2021

Where?

Live Streaming from
George Town, Penang

THEME
FUTURE/TENSE

ISSUES

- Finite Resources
- Homogenous Culture & Diverse Population
- Transient Living
- Natural Disaster - Expect the Unexpected

Why Participate?

2500

Online Delegates

5 DAYS

Congress

4 HOURS

Daily Live Streaming

26 LIVE

Invited Speakers

70

On Demand Videos

7

Key Events

- IFLA World Exco & Council Meeting
- "Kopitiam" Open Studio
- International Student Charrette
- International Student Design Competition
- IFLA2020 World Landscape Architects Summit
- IFLA2020 Satellite Hub Sessions
- IFLA2020 Technical Visits