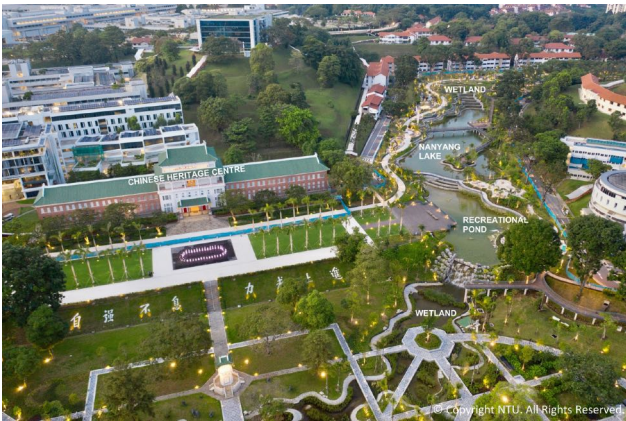


IFLA AAPME Award of Excellence - Nanyang Technological University Yunnan Gardens



STX Landscape Architects had the honour of receiving the Award of Excellence of IFLA AAPME (Africa Asia Pacific Middle East) from Dr Amy KHOR (Senior Minister of State of the Ministry of Sustainability and the Environment of Singapore) for our project NTU Yunnan Gardens at the awards ceremony.

In her speech on the project, Dr Khor underlined the relevance of such a project in today's context of global warming and climatic change, without forgetting the historical roots of the site in its design.

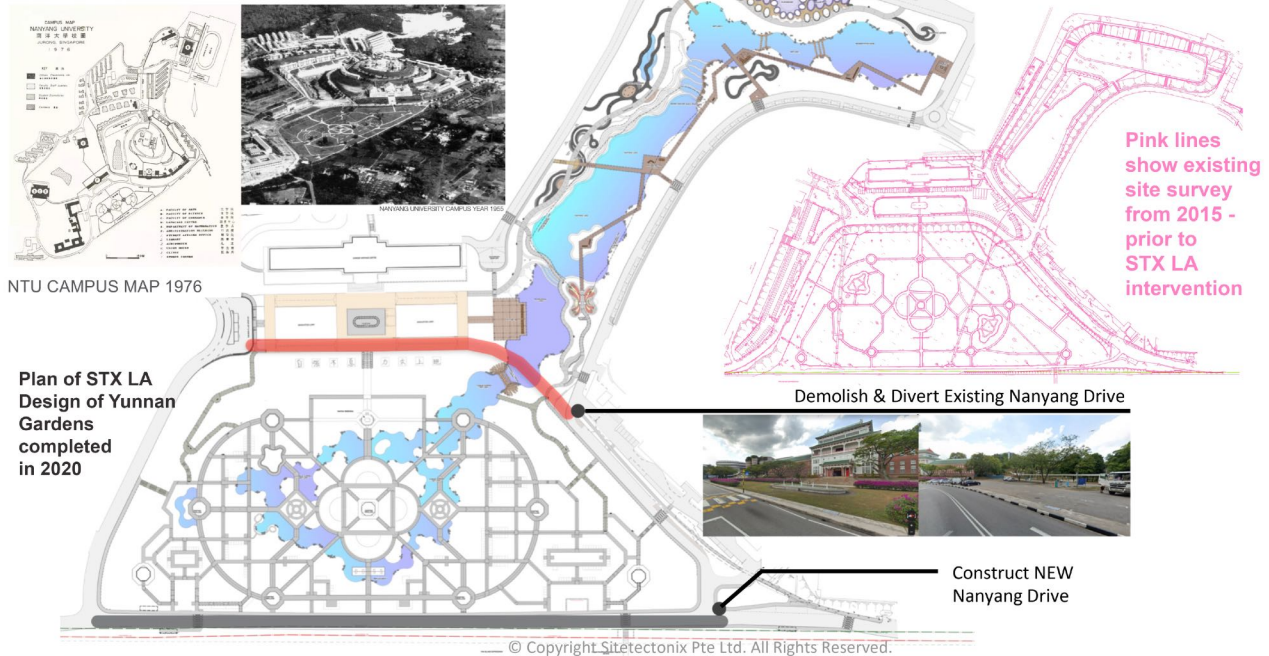


The rejuvenation project of Yunnan Gardens at NTU (Nanyang Technological University) commenced for STX LA with a competition in 2016. From the beginning until it finished in 2020, Yunnan Gardens presented us with many important issues that covered a highly varied gamut of domains : culture, history,



heritage, old trees to be saved, environment and preventive flood management and not least, education. Happily, it is in our DNA - we are passionate about culture, history, the land and its Heritage, and for our projects, we do our best to highlight and bring to the fore these elements, so that the resultant project is well rooted in its context and in its time

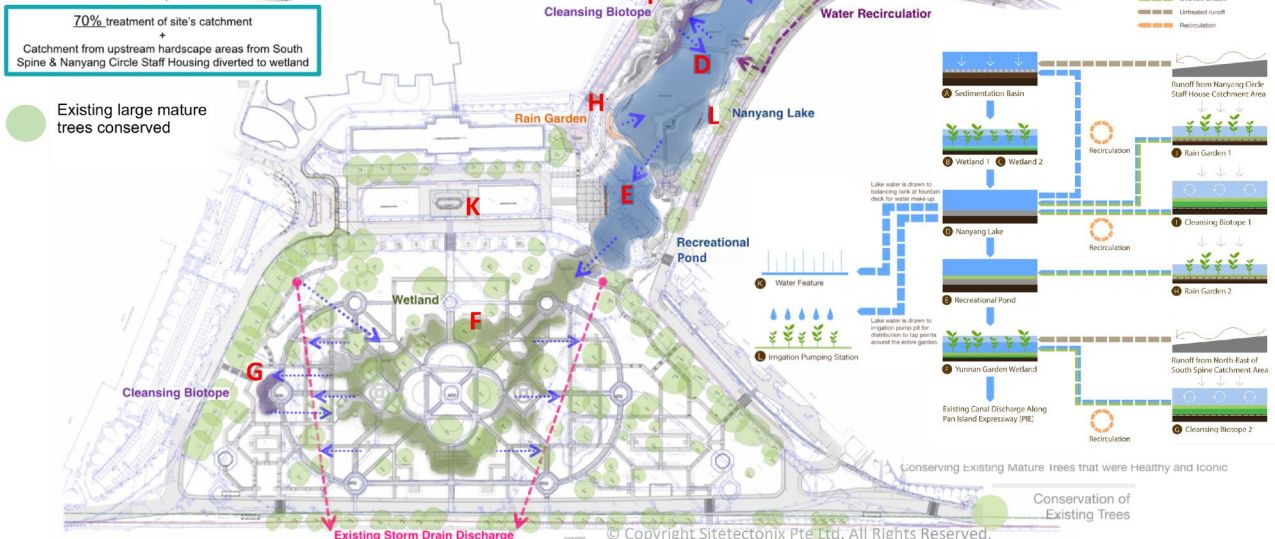
NTU YUNNAN GARDEN REJUVENATION AND DESIGN CRAFTSMANSHIP
Eliminating Boundaries / Stitching Fragmented Patches / Re-affirming Heritage



Yunnan Gardens - the true heart of the original campus of Nanyang University - was a unique garden built in 1955; a fusion of the styles of traditional Chinese, symmetrical French and picturesque English. In the renewal of the garden, STX LA kept its historical assets, reinforcing its fundamental essence, but updating them for the 21st century. We created a series of spaces inter-connected and inter-dependant, capable of promoting biodiversity for the people in the community, while keeping the forms of the original garden fully visible.

EXTENSIVE CONSERVATION OF TREES & BIOPHILIC DESIGN

Changes to topography affects existing trees, so the site was judiciously and carefully re-contoured to save as many of the large mature trees as possible, while implementing a sustainable storm water management system with a proposed treatment train from A to L





In carefully manipulating the contours we could preserve 184 large mature existing trees. A new river eliminates old boundaries and resolves problems in the existing drainage, weaving together spaces previously disparate, disjointed and random; at once useful in the management of storm water and beautiful for inhabitants and visitors alike.

The new development consists of three parts : The Chinese Heritage Centre (CHC) Plaza, Nanyang Lake and Yunnan Gardens.

In the end, this project is not only historic for NTU, but also for STX LA, because for the first time, the lead consultant was the landscape architect - driving the project from commencement till completion.



© Copyright Sitetectorix Pte Ltd. All Rights Reserved.



© Copyright 2021 Sitetectorix Pte Ltd. All Rights Reserved.